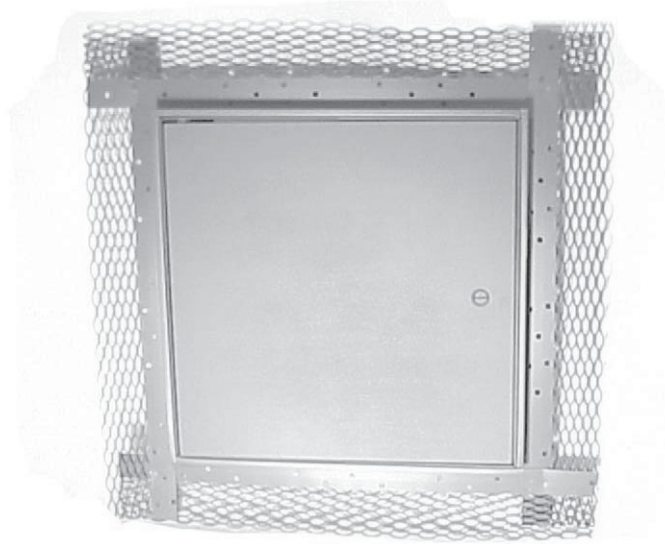


**ML Series**



**Metal Lath Access Doors**

**Doors** are designed specifically to meet the needs of plaster construction. Door has a 3" wide metal lath on all four sides for keying into plaster.

**Door and Frame** are fabricated from 16 gage, galvanized steel.

**Concealed Pivoting Rod Hinge** prevents distortion and closes door squarely. Doors 24" or larger are provided with a continuous piano hinge.

**Latch** is screwdriver operated.

**Finish** is a prime coat suitable for painting.

**Guide Specification**

Provide Elmdor<sup>®</sup> ML Series, Metal Lath Access Doors (specify model number and options). Access door and frame shall be fabricated from 16 gage, galvanized steel with a prime coat finish. Door shall have a concealed pivoting rod hinge. Latch shall be screwdriver operated. Finish shall be a prime coat suitable for painting.



*Elmdor/Stoneman is a Member  
of U.S. Green Building Council*

**ML**

*Revised: 3/24/09*

*Stainless Steel  
is Recyclable*



**MODEL NUMBER AND OPTIONS SELECTION**

**BASE MODEL NUMBER**

ML Metal Lath Access Door

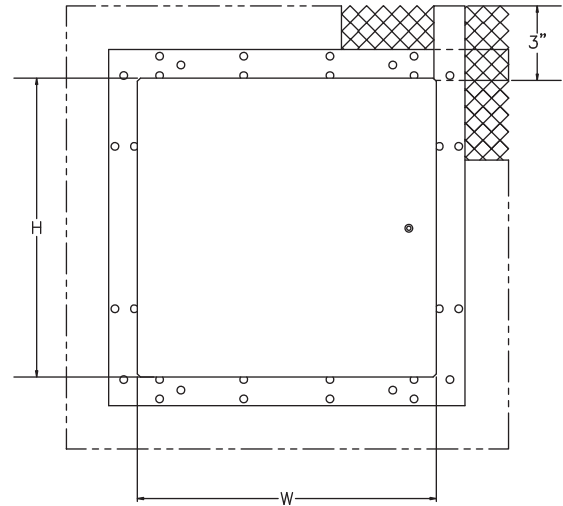
**Suffix Options**

- AKL Allen Key Latch
- CL Cylinder Lock (one per door)
- SS Stainless Steel Construction.  
(Type 304 No 4 Finish Satin Finish)

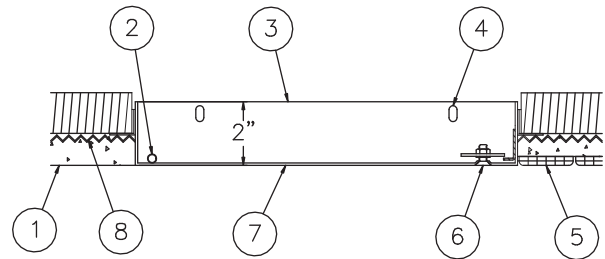
**STANDARD AVAILABLE SIZES**

Special sizes available upon request.

NOMINAL DOOR SIZE (W X H)	WALL OPENING (minimum required)	LATCHES	WEIGHT
ML 8" x 8"	8-1/4" x 8-1/4"	1	4 lbs.
ML 8" x 12"	8-1/4" x 12-1/4"	1	5.5 lbs.
ML 10" x 10"	10-1/4" x 10-1/4"	1	5.5 lbs.
ML 12" x 12"	12-1/4" x 12-1/4"	1	6.5 lbs.
ML 12" x 16"	12-1/4" x 16-1/4"	1	9 lbs.
ML 12" x 18"	12-1/4" x 18-1/4"	1	10 lbs.
ML 12" x 24"	12-1/4" x 24-1/4"	2	11.5 lbs.
ML 14" x 14"	14-1/4" x 14-1/4"	2	8 lbs.
ML 16" x 16"	16-1/4" x 16-1/4"	2	11 lbs.
ML 16" x 20"	16-1/4" x 20-1/4"	2	12.5 lbs.
ML 18" x 18"	18-1/4" x 18-1/4"	2	13 lbs.
ML 18" x 24"	18-1/4" x 24-1/4"	2	20 lbs.
ML 20" x 24"	20-1/4" x 24-1/4"	2	22 lbs.
ML 20" x 30"	20-1/4" x 30-1/4"	3	23.5 lbs.
ML 24" x 24"	24-1/4" x 24-1/4"	3	21 lbs.
ML 24" x 30"	24-1/4" x 30-1/4"	3	24.5 lbs.
ML 24" x 36"	24-1/4" x 36-1/4"	3	29.5 lbs.
ML 30" x 30"	30-1/4" x 30-1/4"	3	25.5 lbs.
ML 36" x 36"	36-1/4" x 36-1/4"	3	28 lbs.



**FRONT VIEW**



**SIDE VIEW**

**NOTES:**

1. FINISH LINE, PLASTER OVER MASONRY
2. CONCEALED PIVOTING ROD HINGE
3. FRAME
4. MOUNTING HOLES
5. CERAMIC TILE OVER PLASTER
6. SCREWDRIVER OPERATED LATCH
7. DOOR
8. METAL LATHE

Dimensions are subject to manufacturer's tolerance of plus or minus 1/4". Elmdor/Stoneman assumes no responsibility for use of void or suspended data. Please visit [www.elmdorstoneman.com](http://www.elmdorstoneman.com) for most current specifications. © Copyright 2009 Elmdor/Stoneman, City of Industry, CA, A Division of Acorn Engineering Company.

SELECTION SUMMARY & APPROVAL FOR MANUFACTURING	
Model Number & Options _____	Quantity _____
Company _____	Date _____
Contact _____	Title _____
Approval for Manufacturing/Signature _____	

**ML**

Revised: 3/24/09